



SPORT CLIMBING AUSTRALIA

Competition Policy

Introduction, certification process and requirements

Aim

Sport Climbing Australia has developed a national competition policy to;

- Promote fair and professionally organised competitions
- Ensure consistency in state and national level competitions in Australia
- Encourage participation and enjoyment for climbers of all levels
- Provide opportunities for our best climbers to develop their skills with the aim to compete internationally

1 Disciplines

Sport Climbing Australia has overall responsibility over the national ranking for the three competition climbing disciplines:

- **Lead:** Climbs ('Routes') are climbed with the competitor clipping into protection points as they climb (on "Lead"). Progression along the line of the route determines a competitor's ranking.
- **Bouldering:** Short climbs ('Boulders') are attempted without ropes but with landing mats for protection. The number of boulders completed determines a competitor's ranking.
- **Speed:** Climbs are attempted with an in-situ rope (on "Top-Rope"). The time to complete the route determines a competitor's ranking.

2 Competition in Australia

2.1 Regional events

These events are organized by climbing facilities and/or SCA state committees. Rules and governance of these events is at the discretion of the organiser.

2.2 State Level Competition

State level competitions are held in each state once a year for each discipline. All SCA Guidelines and Policies apply to these events. Not all states may have state competition at this stage. However,



SPORT CLIMBING AUSTRALIA

it is possible for a competition to be held as a multiple state competition. In that case, podiums and ranking points will be split.

2.3 National Level Competition

National level competitions are held once a year. All SCA Guidelines and Policies apply to these events.

3 Financial Assistance

- At the start of the calendar year, the SCA board will determine, based on current finances and expected income, how much money can be allocated to drug testing and to each intended state and national level competition
- State committees or the event organisers can decide how this money is used; to pay for route setters, trophies or as prize money
- The money will allocated at a ratio of 2:1 with national events getting twice the allocation of the state events
- The money will be paid at the conclusion of the event
- If an event does not occur or is not run to standard, the money shall not be paid to the organisers

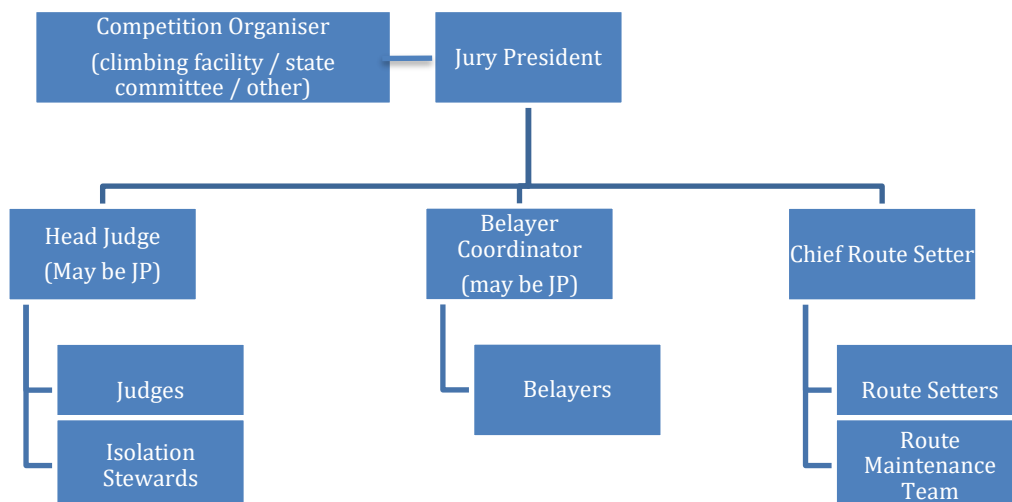
4 Anti-Doping

- SCA will endeavor to conduct drug testing through the services of ASADA at one or more state or national event each year

5 Rules and Policies

Rules for the three disciplines are the official Sport Climbing Australia Rules. These can be found at sportclimbingaustralia.com.au

6 Officials Hierarchy (state and national events)





SPORT CLIMBING AUSTRALIA

The Jury president (JP) has overall authority in the competition area. The JP works closely to Head Judge, Belayer Coordinator and Chief Route Setters. Some events may not have a Head Judge or Belayer Coordinator. In that case the Jury President will take these roles.



SPORT CLIMBING AUSTRALIA

7 Certification Process

7.1 Judging

Certification Level	Can be Assessed by	Requirement	Required for	SCA Membership Required	Maintaining Certification
Judge	State HJ/JP	Successfully judged at a state, national or regional event		No membership is required for judging. National Level membership required for certification.	Judge <u>once every three years</u>
State Judge	State HJ/JP	Successfully judged at a state event following the judge position description. Completed a SCA judging course and passed the assessment.	Judging finals at state level competitions. Judging at National level competitions	No membership is required for judging. National Level membership required for certification.	Judge <u>once every three years</u> at a state level event.
National Judge	National HJ/JP	Successfully judged at a national event following the judge position description. Be a state judge. Must be in a different year to obtaining state qualification.	Judging finals at national level competitions	No membership is required for judging. National Level membership required for certification.	Judge <u>once every three years</u> at a national level event.
State Head Judge	National HJ/JP	Successfully perform as a HJ at a state event following the HJ position description. Be a State Judge.	Being a HJ at State level competitions	State level membership of the state the event is being held or National Membership	Be a HJ/JP <u>once every three years</u> at a state level event.
State Jury President	National HJ/JP	Successfully perform as a JP at a state event following the JP position description. Be a State Head Judge.	Being a JP at State level competitions	State level membership of the state the event is being held or National Membership	Be a HJ/JP <u>once every three years</u> at a state level event.
National Head Judge	National JP	Successfully perform as a HJ at a national event following the HJ position description. Be a National Judge and state JP.	Being HJ at National level competitions	National Membership	Be a HJ/JP <u>once every three years</u> at a national level event.
National Jury President	All National HJ/JP (vote)	Successfully perform as a JP at a national event following the JP position description. Be a National Judge and state JP.	Being JP at National level competitions	National Membership	Be a HJ/JP <u>once every three years</u> at a national level event.



SPORT CLIMBING AUSTRALIA

7.2 Route Setting

Four types of Route Setters certifications:

- Regional Route Setter
- State Route Setter
- National Route Setter
- State Head Route Setter (HRS)
- National Head Route Setter (HRS)

Certification Level	Can be Assessed by	Requirement	Required for	SCA Membership Required	Ongoing Requirement
Regional Route Setter	State HRS	Successfully route set at a state event		State level membership of the state the event is being held or National Membership.	Route Set <u>once every three years</u> at a state level event
State Route Setter	State HRS	Successfully route set at a state event following the route setter position description.	Route Set at national level competitions	State level membership of the state the event is being held or National Membership.	Route Set <u>once every three years</u> at a state level event
National Route Setter	National HRS	Successfully route set at a national event following the route setter position description	Route Set at national level competitions (setting final climbs)	National Level Membership	Route Set <u>once every three years</u> at a national level event
State HRS	National HRS	Successfully perform as a HRS at a state event following the HRS position description. Be a State RS.	Being HRS at National level competitions	State level membership of the state the event is being held or National Membership.	Be a HRS <u>once every three years</u> at a state level event
National HRS	All National HRS (vote)	Successfully perform as a HRS at a national event following the HRS position description. Be a National RS and state HRS.		National membership	Be a HRS <u>once every three years</u> at a national level event



SPORT CLIMBING AUSTRALIA

7.3 Belaying

Two types of Belayer certifications:

- Competition Belayer
- Belayer Assessor

Certification Level	Can be Assessed by	Requirement	Required for	SCA Membership Required	Ongoing Requirement
Competition Belayer	Belayer Assessor	Successfully belay at a state event following the belayer position description. Passed the belaying assessment.	Belaying at a state or national event	No membership is required for belaying only but only to receive certification (state level membership of the state the event is being held)	Belay <u>once every two years</u> at a state level event
Belayer Assessor	All Belayer Assessors (Vote)	Passed the belayer assessor assessment.		State level membership of the state the event is being held or National Membership.	Participate <u>once every three years</u> to the national belayer seminar (at lead nationals)